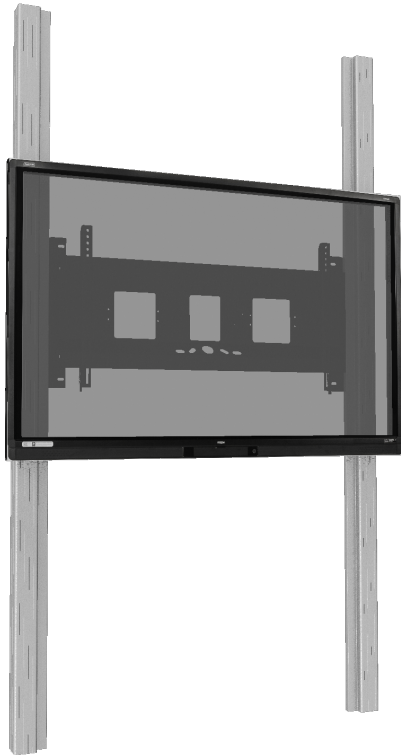


# WALL MOUNTED 2 PYLON SLIDING SYSTEM FOR DISPLAYS FROM 65-86"

MANUALLY HEIGHT-ADJUSTABLE WITH PULLEY AND COUNTER WEIGHT



## PRODUCT

This manually height-adjustable pylonsystem with pulley is compatible with all touch screen displays available on the market from 65" to 86" screen diagonal.

The two aluminum pylons are mounted on the wall and floor, the display brackets slides between these pylons by pulley and counter weight. This ensures that every user can work and present at the ergonomically best height. A handle is supplied as standard for height adjustment.

## Accessories



Keyboard shelf



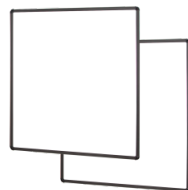
2 galvanized adjustable wall mounting brackets



2 galvanized wall mounting brackets



Swivel arm for notebooks



Whiteboard wings for AFSCETAN12

## FEATURES

- Please indicate the model of the monitor when placing your order
- Manually height-adjustable system with 2 pylons for floor and wall mounting
- different pylon length available: 2600 mm or 2900 mm
- center to floor distance at 2900 mm length of pylon = approx. 1500 mm - 2100 mm
- center to floor distance at 2600 mm length of pylon = approx. 1150 mm - 1750 mm
- Height adjustment with counterweights and pulley
- All connections on the display are freely accessible
- at least 600 mm stroke



Display mount



Wall mounted



Manual height adjustable



Single display



Max. load  
100 kg / 220.5 lbs

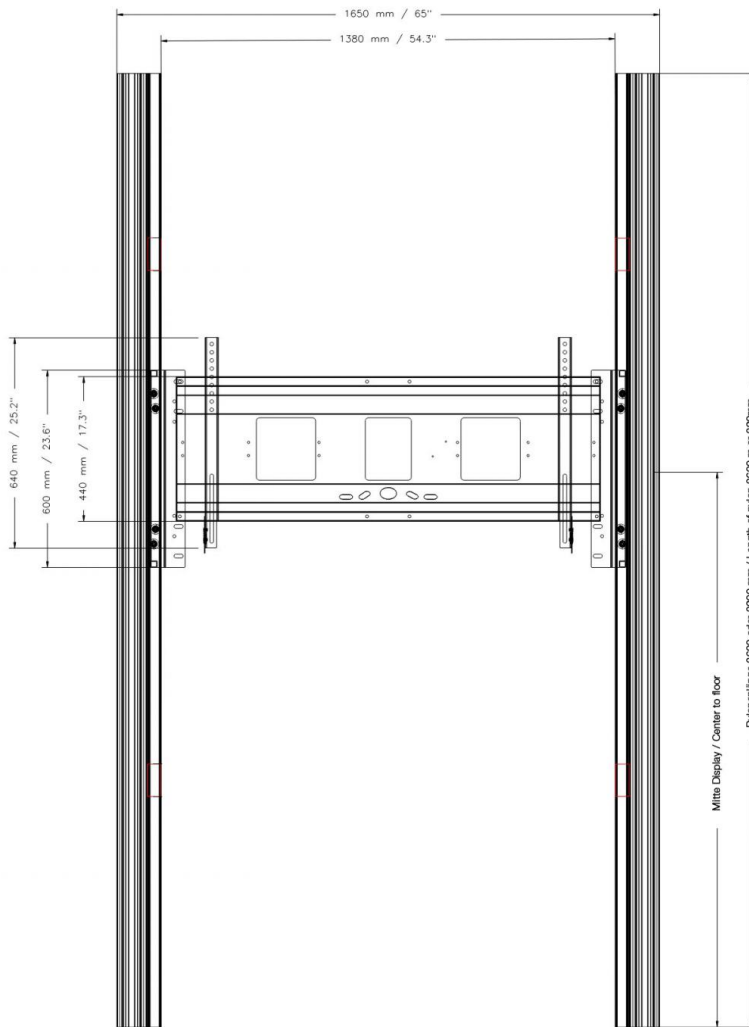


Max. Vesa  
800 x 600

Item number	PYF1-IFPD-W	
Vesa horizontal / Vesa vertical	200 mm - 800 mm / 200 mm - 600 mm	
Frame for all	65" - 86"	
Center to floor distance	1500 mm - 2100 mm	59.1" - 82.7"
Load capacity	100 kg	220.5 lbs
Width / Height / Depth	1650 mm / 2900 mm / 136 mm	65" / 114.2" / 5.4"
Frame color	RAL 9005 deep black	
Column color	Silver anodized	
Packages	Package dimensions WxHxD	Package weight
AF-PY-NG		
AFPYN12GU		
AI-0019		
GEWICHT-L		
GEWICHT-R		
PYTVF29		

DIMENSIONS

in mm / inch



MANUFACTURER:

CONEN Produkte GmbH  
 Conenstr. 4  
 54497 Morbach-Gonzerath

Phone: +49 (0) 6533 75-100  
 Fax: +49 (0) 6533 75-600  
 E-Mail: info@conenmounts.com

Germany

[www.conenmounts.com](http://www.conenmounts.com)