



## SCEXLWB

EL. HÖHENVERSTELLBARES SYSTEM ZUR WANDMONTAGE  
EL. HEIGHT ADJUSTABLE SYSTEM FOR WALL MOUNTING

Conen Produkte GmbH & Co. KG  
Conenstr. 4  
54497 Morbach-Gonzerath  
  
Germany

Tel.: +49 (0) 6533 75 - 203/ - 300  
Fax: +49 (0) 6533 75 - 600  
eMail: [info@conen-interaktiv.de](mailto:info@conen-interaktiv.de)

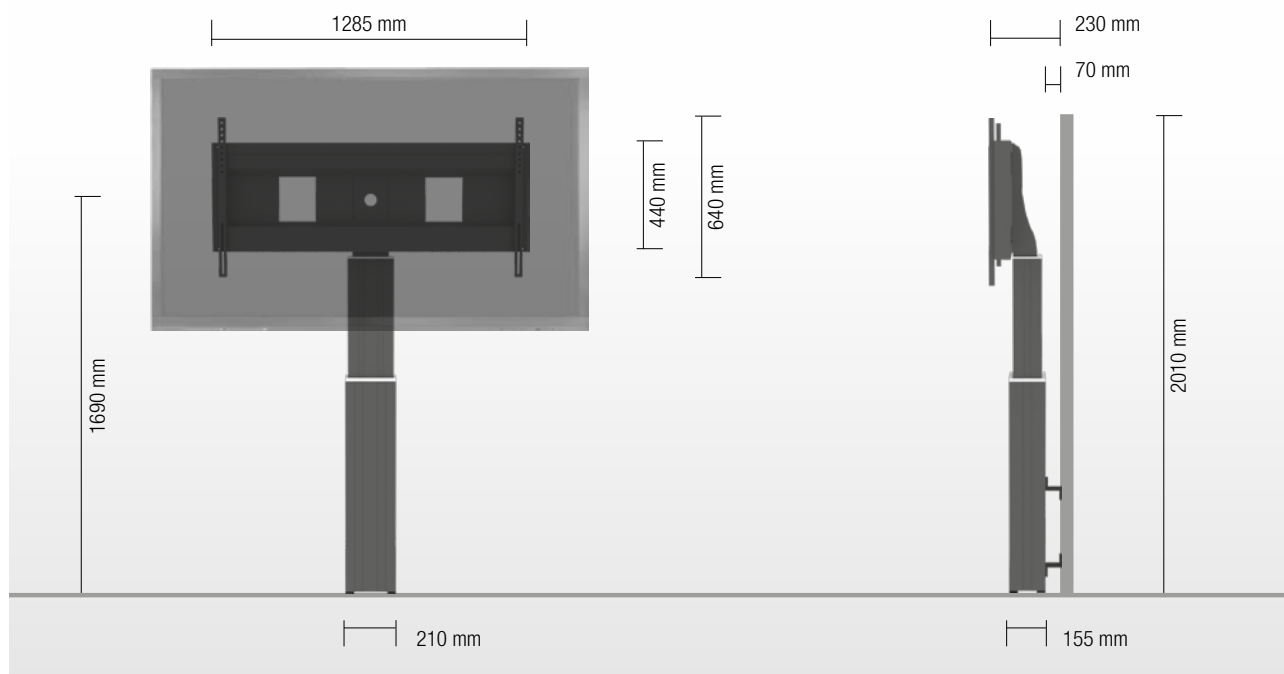
[www.conen-interaktiv.de](http://www.conen-interaktiv.de)



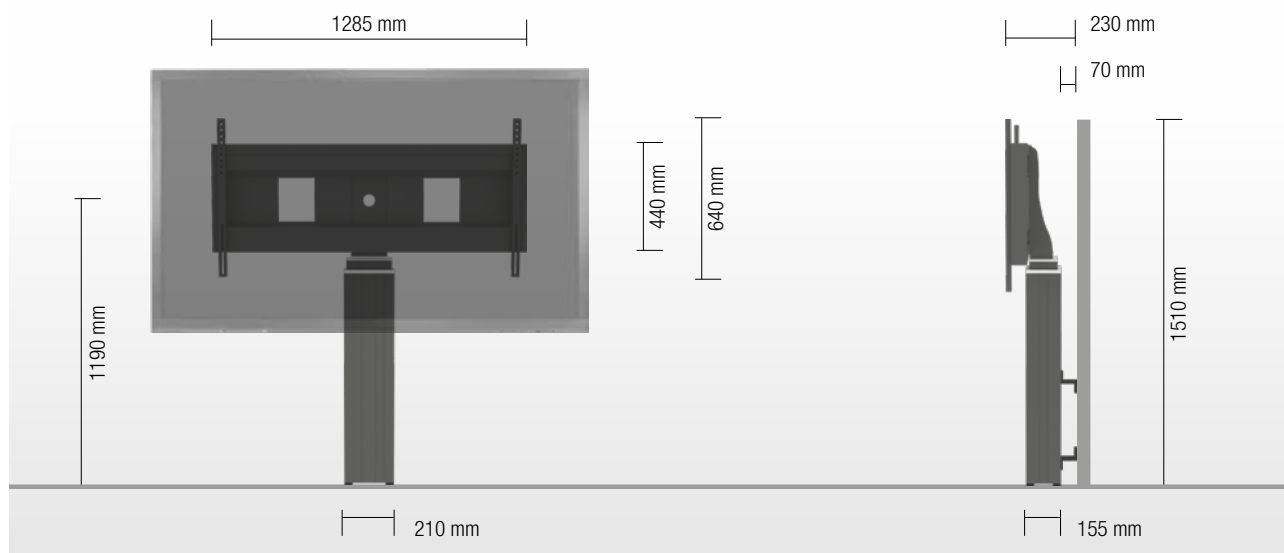
### PRODUKTEIGENSCHAFTEN | PRODUCT FEATURES

- ◆ Elektrisch höhenverstellbare Pylone, schwarz eloxiert
- ◆ 500 mm Hub
- ◆ Geeignet zur Montage an massiver Wand, Standardwandabstand: 70 mm, 4 Bodenausgleichsfüße
- ◆ XL-Halterung zur Verwendung mit 70" – 120" Display
- ◆ VESA 300 x 200 bis 1200 x 600
- ◆ Maximale Belastung ca. 150 kg
- ◆ Electrical height adjustable column, black anodized
- ◆ 500 mm height adjustment
- ◆ System suitable for wall mounting on massive walls, wall clearance by default 70 mm, 4 leveling feet
- ◆ XL-display mount for use with 70" – 120" display
- ◆ VESA 300 x 200 up to 1200 x 600
- ◆ Maximum load approximately 150 kg

### HÖCHSTE STELLUNG | HIGHEST POSITION



### NIEDRIGSTE STELLUNG | LOWEST POSITION



DETAILANSICHTEN | DETAIL VIEWS



Schnappklammern erleichtern die Montage  
Pull & release locking brackets for easier mounting of display

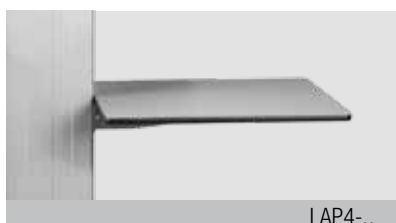


BodenausgleichsfüÙe  
Leveling feet



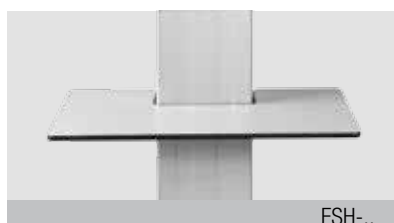
Elektrische Höhenverstellung  
Wired remote control

WÄHLBARES ZUBEHÖR | AVAILABLE ACCESSORIES



LAP4-..

Seitentisch  
Side shelf



FSH-..

Ablagetisch  
Front shelf



MINI-FUJI

Abschließbare Mini-PC Halterung  
Lockable mini PC bracket



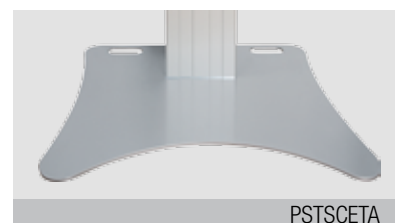
AFSCETAKB

Tastaturhalterung  
Keyboard shelf



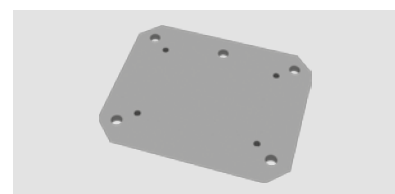
VCTSCETA

Halter für Videokonferenzkameras  
Video conference camera top shelf



PSTSCETA

Bodenplatte  
Floor plate



PSTSCETAS

Platte zur Bodenmontage  
Plate to groundfixing



REM-FOOT

Fußschalter  
Foot remote control



CCE-EXT20

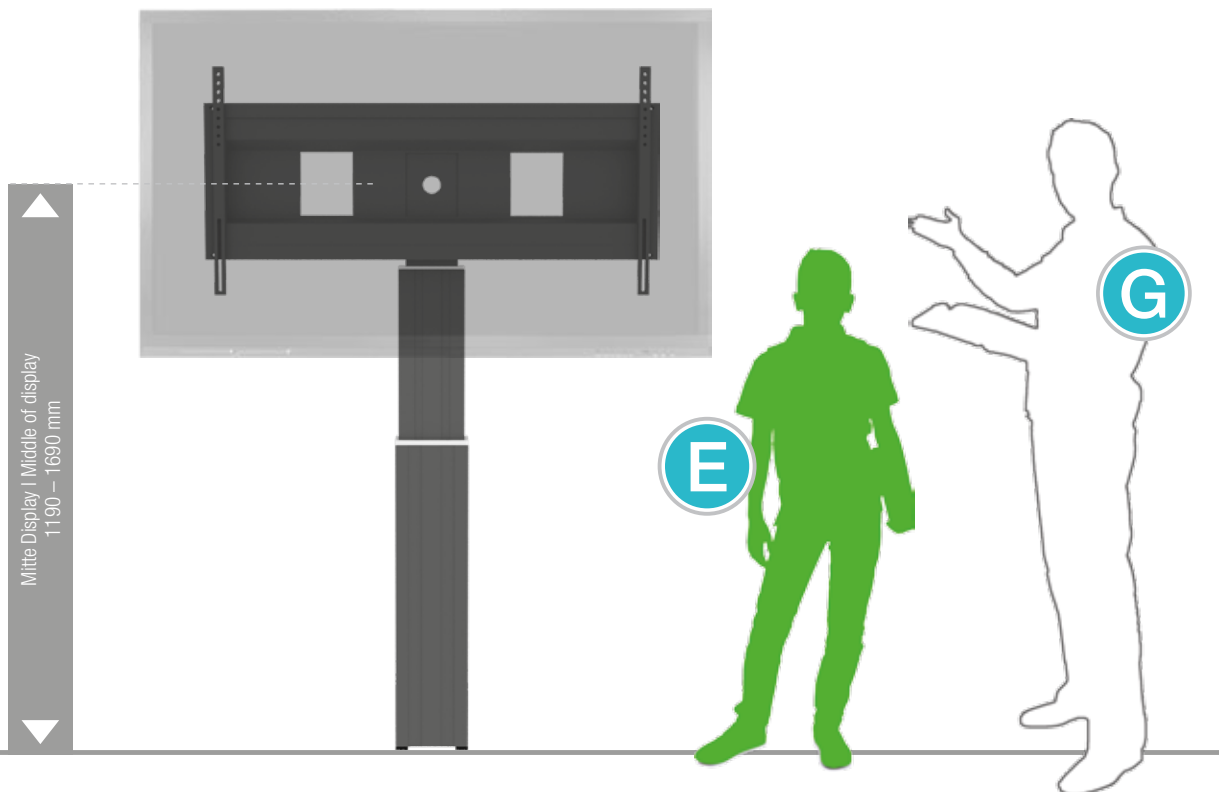
Verlängerung (200 mm)  
Extender (200 mm)



SCHLIESS-VH

Display Sicherheitsschloss  
Display securing padlock

## GRÖSSENINDEX | SIZE INDEX



| Bereich   Department         | Kindergarten |             |             |             | Grundschule<br>Primary school |             | Weiterführende Schule<br>Secondary school |  | Erwachsene<br>Adults |
|------------------------------|--------------|-------------|-------------|-------------|-------------------------------|-------------|---|--|----------------------|
|                              | A            | B           | C           | D           | E                             | F           | G   |  |                      |
| Silhouette   Silhouette      | A            | B           | C           | D           | E                             | F           | G   |  |                      |
| Alter (Jahre)   Age (years)  | 2 – 3        | 3 – 4       | 4 – 7       | 6 – 11      | 11 – 14                       | 13 – 16     | ab   from 16                              |  |                      |
| Körpergröße   Body size (mm) | 930 – 980    | 1080 – 1210 | 1190 – 1420 | 1330 – 1590 | 1460 – 1765                   | 1590 – 1880 | 1740 – 2070                               |  |                      |
| Farbe   Colour               | Green        | Purple      | Yellow      | Red         | Light Green                   | Blue        |   |  |                      |

## PACKEINHEITEN | PACKING UNITS

| Artikel-Nr.<br>Item no.      | Beschreibung   Description  | Packmaße<br>Packing dimensions<br>(mm) | Nettogewicht<br>Net weight<br>(kg) | Bruttogewicht<br>Gross weight<br>(kg) |
|------------------------------|---|--|------------------------------------|---------------------------------------|
| CCE70-WB                     | Elektrisch höhenverstellbare Pylone, 500 mm Hub, L = 900 mm<br>electrical height adjustable column, 500 mm height adjustment,<br>L = 900 mm | 1180 x 270 x 200                       | 21,0                               | 23,1                                  |
| AFSCETAN12                   | XL-Display Halterung   XL-display mount   | 1295 x 160 x 450                       | 15                                 | 18                                    |
| Gesamtgewicht   Total weight |   |  | 36                                 | 41,1                                  |