



SCETANHVP

FIXED HEIGHT WALLMOUNTING SYSTEM

Factory:

Conen Produkte GmbH & Co. KG
Conenstr. 4
54497 Morbach-Gonzerath
Germany

International sales department:

Mr. Luc van der Sterren
Office: +49 65 33 75 311
Cell: +31 612 495 098
Email: Luc@conenmounts.com

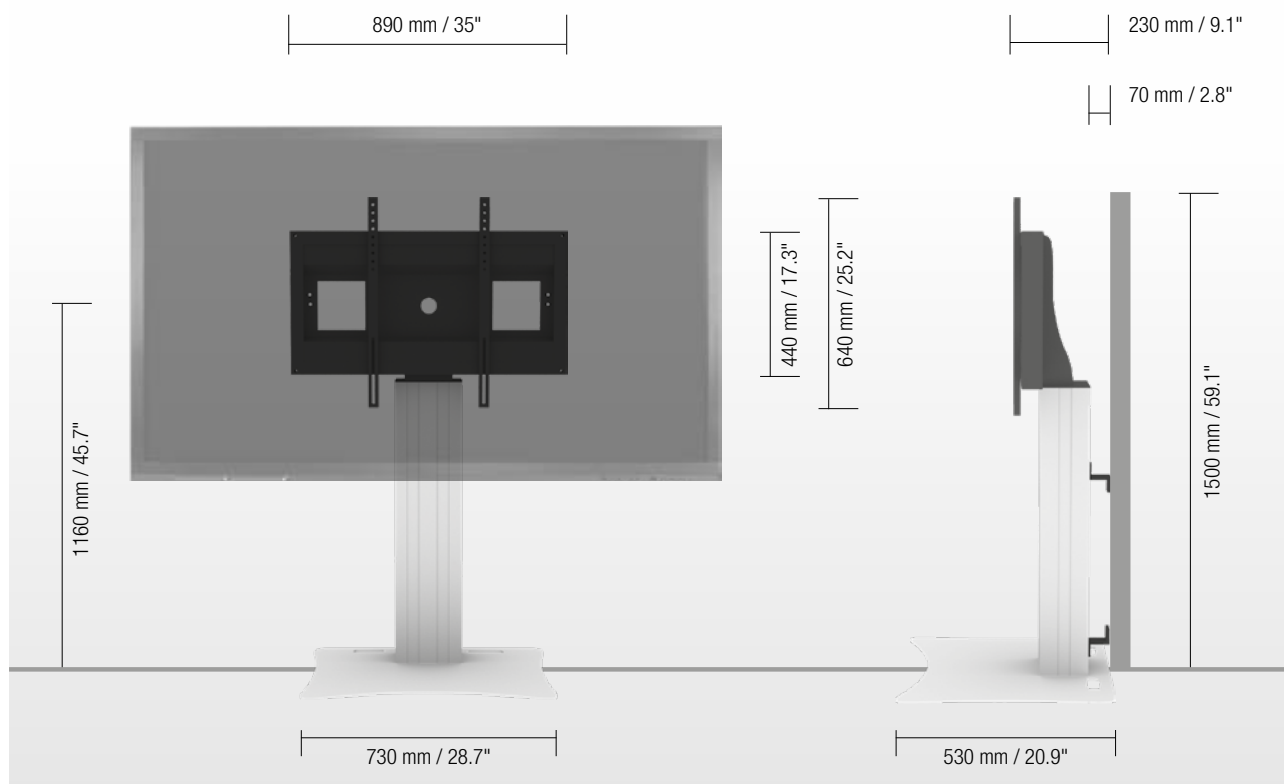
Mr. Arnaud Gielen
Office: +49 6533 75 310
Cell: +49 172 655 84 61
Email: Arnaud@conenmounts.com



PRODUCT FEATURES

- ◆ Column, natural anodized
- ◆ Column height: 930 mm / 36.6"
- ◆ Floor plate made of 8 mm / 0.3" strong steel, powder-coated, RAL 9006 white aluminum
- ◆ Display mount for use with 42" – 100"
- ◆ VESA 400 x 200 up to 800 x 600
- ◆ Maximum load approximately 150 kg / 330.7 lbs

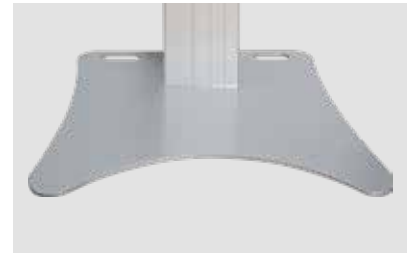
DIMENSIONS



DETAIL VIEWS

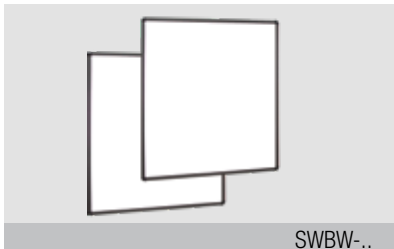


Pull & release locking brackets for easier mounting of display



Floor plate

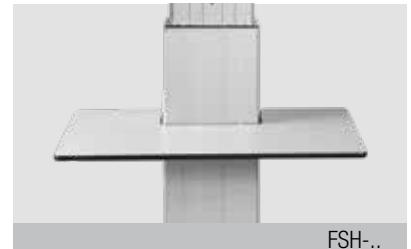
AVAILABLE ACCESSORIES



2 whiteboard side wings



Side shelf



Front shelf



Lockable mini PC bracket



Keyboard shelf



Video conference camera top shelf



Extender (200 mm / 7.9")

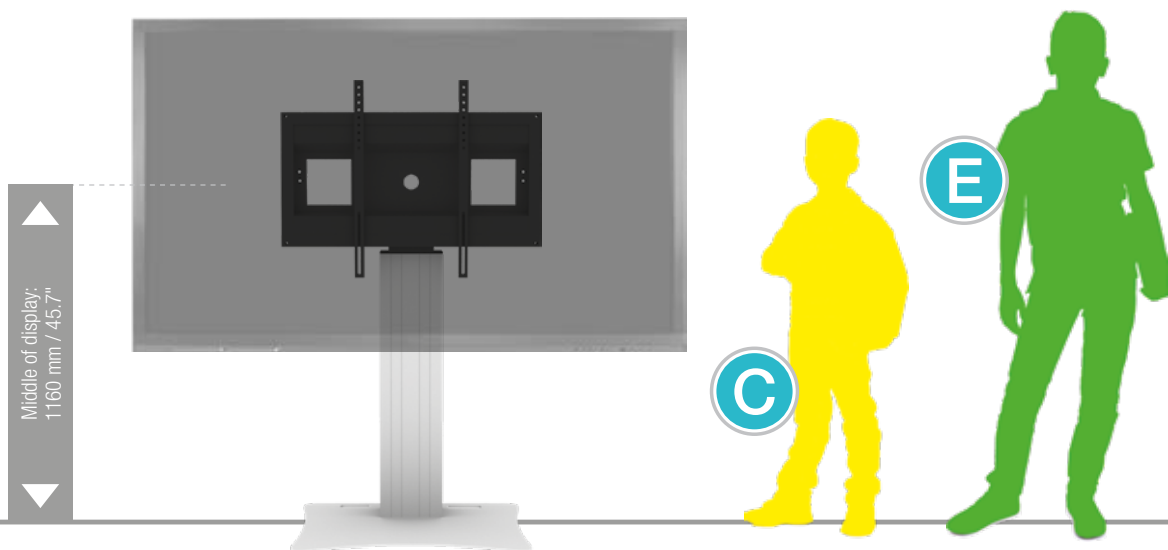


2 box holders (boxes on request)



Display securing padlock

SIZE INDEX



Department	Kindergarten			Primary school		Secondary school		Adults
	A	B	C	D	E	F	G	
Silhouette	A	B	C	D	E	F	G	
Age (years)	2 – 3	3 – 4	4 – 7	6 – 11	11 – 14	13 – 16	from 16	
Body size (mm / ")	930 – 980 37 – 38.6	1080 – 1210 42.5 – 47.6	1190 – 1420 46.9 – 56	1330 – 1590 52.4 – 62.6	1460 – 1765 57.5 – 69.5	1590 – 1880 62.6 – 74	1740 – 2070 68.5 – 81.5	
Color	Green	Purple	Yellow	Red	Green	Blue		

PACKING UNITS

Item no.	Description	Packing dimensions (mm / ")	Net weight (kg / lbs)	Gross weight (kg / lbs)
CC-93W	Column, column height: 930 mm / 36.6", 930 mm / 36.6"	1190 x 270 x 200 / 46.9 x 10.6 x 7.9	13,5 / 29.8	15,3 / 33.8
AF-SCETA-N	Display mount	160 x 900 x 450 / 6.3 x 35.4 x 17.7	11,7 / 25.8	13,6 / 30
PSTSCETA	Floor plate	20 x 750 x 570 / 0.8 x 29.5 x 22.4	21 / 46.3	21,8 / 48.1
Total weight			46,2 / 101.9	50,7 / 111.9