



SCEXLP

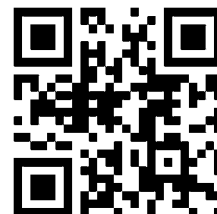
EL. HÖHENVERSTELLBARES SYSTEM MIT BODENPLATTE
EL. HEIGHT ADJUSTABLE SYSTEM WITH FLOOR PLATE

Conen Produkte GmbH & Co. KG
Conenstr. 4
54497 Morbach-Gonzerath

Germany

Tel.: +49 (0) 6533 75 - 203/ - 300
Fax: +49 (0) 6533 75 - 600
eMail: info@conen-interaktiv.de

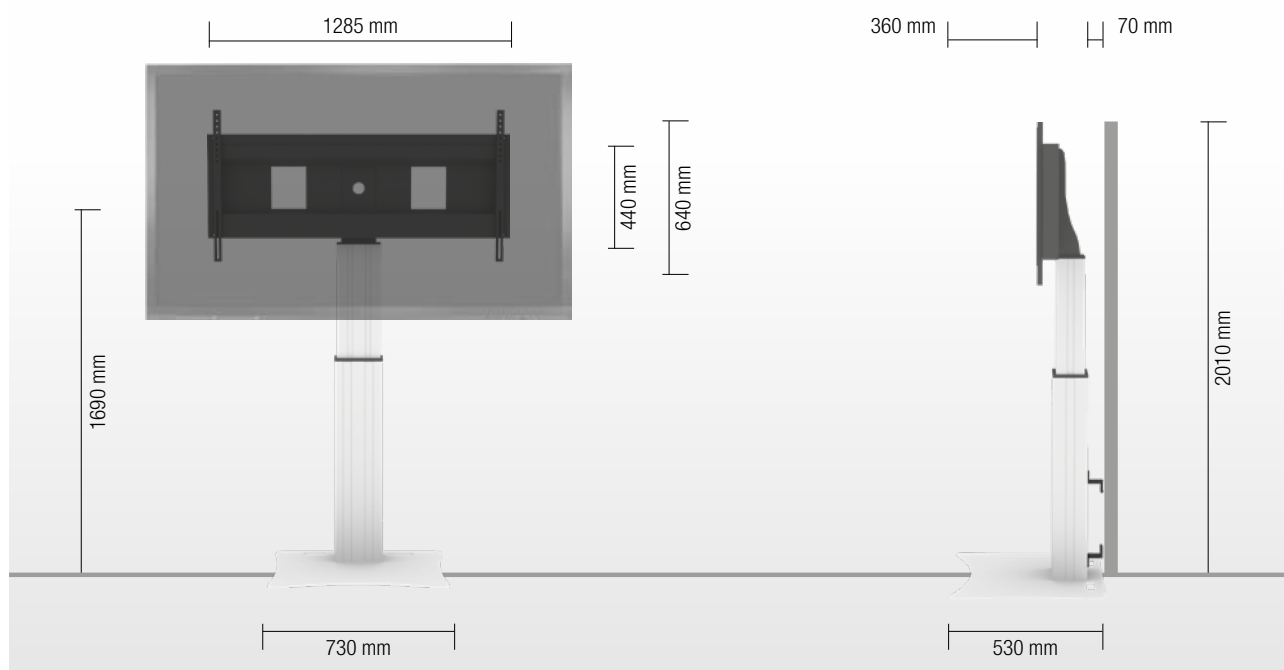
www.conen-interaktiv.de



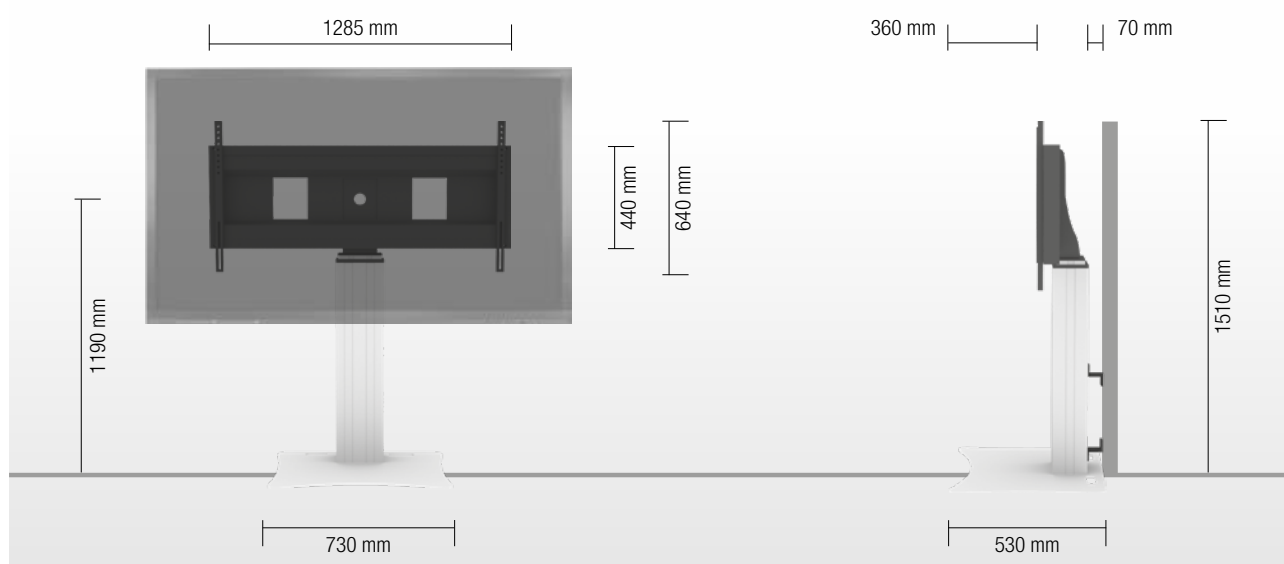
PRODUKTEIGENSCHAFTEN | PRODUCT FEATURES

- ◆ Elektrisch höhenverstellbare Pylone, natur eloxiert
 - ◆ 500 mm Hub
 - ◆ 8 mm starke Bodenplatte, RAL 9006 Weißaluminium
 - ◆ XL-Halterung zur Verwendung mit 70" – 120" Display
 - ◆ VESA 300 x 200 bis 1200 x 600
 - ◆ Maximale Belastung ca. 150 kg
 - ◆ Inkl. Wandabstandshalter (70 mm)
- ◆ Electrical height adjustable column, natural anodized
 - ◆ 500 mm height adjustment
 - ◆ Floor plate made of 8 mm strong steel, powder-coated, RAL 9006 white aluminum
 - ◆ XL-display mount for use with 70" – 120" display
 - ◆ VESA 300 x 200 up to 1200 x 600
 - ◆ Maximum load approximately 150 kg
 - ◆ Incl. wall brackets (70 mm)

HÖCHSTE STELLUNG | HIGHEST POSITION



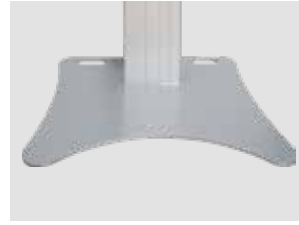
NIEDRIGSTE STELLUNG | LOWEST POSITION



DETAILANSICHTEN | DETAIL VIEWS



Schnappklammern erleichtern die Montage
Pull & release locking brackets for easier mounting of display

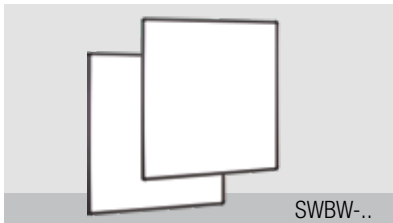


Bodenplatte
Floor plate



Elektrische Höhenverstellung
Wired remote control

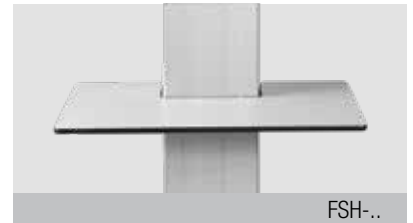
WÄHLBARES ZUBEHÖR | AVAILABLE ACCESSORIES



2 Whiteboard Seitenflügel
2 whiteboard side wings



Seitentisch
Side shelf



Ablagetisch
Front shelf



Abschließbare Mini-PC Halterung
Lockable mini PC bracket



Tastaturhalterung
Keyboard shelf



Halter für Videokonferenzkameras
Video conference camera top shelf



Fußschalter
Foot remote control

REM-FOOT

VCTSCETA



Verlängerung (200 mm)
Extender (200 mm)



2 Boxenhalter (Boxen auf Anfrage)
2 box holders (boxes on request)

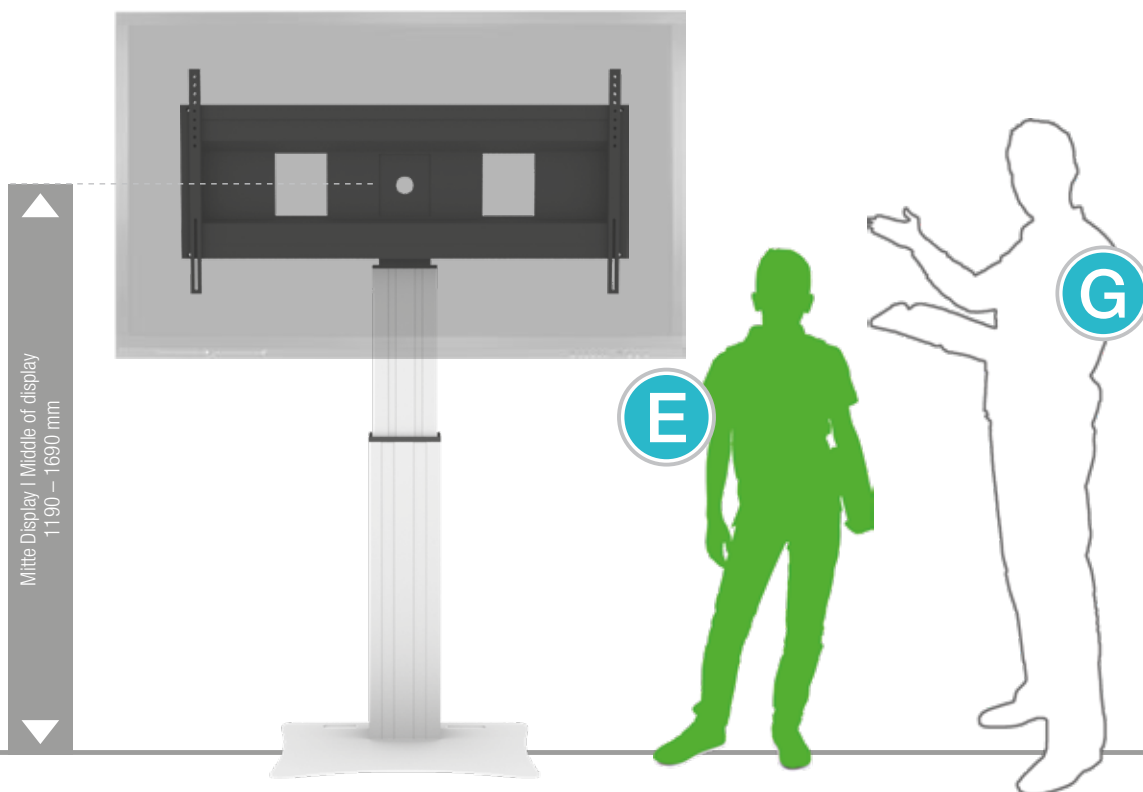


Display Sicherheitsschloss
Display securing padlock

CCE-EXT20

SCHLIESS-VH

GRÖßENINDEX | SIZE INDEX



| Bereich Department | Kindergarten | | | Grundschule Primary school | | Weiterführende Schule Secondary school | | Erwachsene Adults |
|------------------------------|--------------|-------------|-------------|-------------------------------|-------------|---|--------------|----------------------|
| | A | B | C | D | E | F | G | |
| Silhouette Silhouette | A | B | C | D | E | F | G | |
| Alter (Jahre) Age (years) | 2 – 3 | 3 – 4 | 4 – 7 | 6 – 11 | 11 – 14 | 13 – 16 | ab from 16 | |
| Körpergröße Body size (mm) | 930 – 980 | 1080 – 1210 | 1190 – 1420 | 1330 – 1590 | 1460 – 1765 | 1590 – 1880 | 1740 – 2070 | |
| Farbe Colour | Green | Purple | Yellow | Red | Light Green | Blue | | |

PACKEINHEITEN | PACKING UNITS

| Artikel-Nr. Item no. | Beschreibung Description | Packmaße Packing dimensions (mm) | Nettogewicht Net weight (kg) | Bruttogewicht Gross weight (kg) |
|------------------------------|---|--|------------------------------------|---------------------------------------|
| CCE70-W | Elektrisch höhenverstellbare Pylone, 500 mm Hub, L = 900 mm Electrical height adjustable column, 500 mm height adjustment, L = 900 mm | 1180 x 270 x 200 | 21 | 23,1 |
| AFSCETAN12 | XL-Display Halterung XL-display mount | 1295 x 160 x 450 | 15 | 18 |
| PSTSCETA | Bodenplatte Floor plate | 20 x 750 x 570 | 21 | 21,8 |
| Gesamtgewicht Total weight | | | 57 | 62,9 |