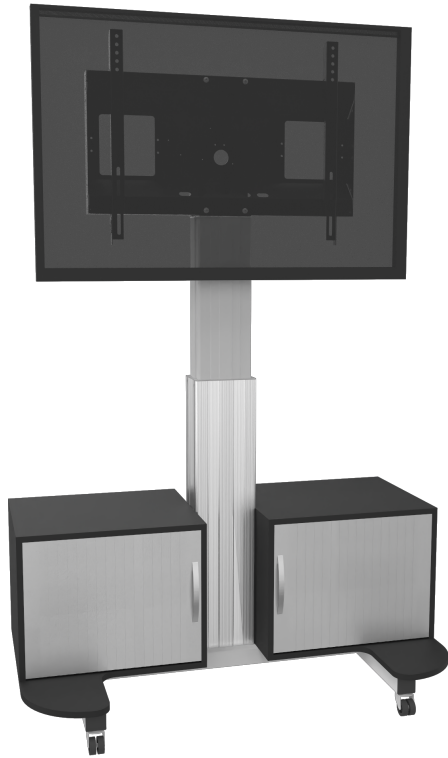


MOBILE TV CABINET – TV STAND WITH MOUNT, ELECTRICALLY HEIGHT ADJUSTABLE 42 - 86 INCH MONITOR STAND

SILVER ANODIZED, WITH TWO BASE CABINETS AND ROLLER BLINDS



PRODUCT

Our Conen Mounts electrically height adjustable mobile TV stands with two roller blinds can be easily adjusted in height. The roller blind TV cabinets provide enough space for documents and other important utensils for your presentation! The silver blinds and the TV cabinet doors are lockable at the front. The right lower cabinet offers you an excerpt for devices such as notebooks and laptops and a height-adjustable shelf. The left lower cabinet has two additional height-adjustable shelves. Another advantage of this system is the absolute freedom from maintenance - it never has to be adjusted, never lubricated or readjusted.

The mobile Conen Mounts TV cabinets have 4 smooth-running wheels and can therefore be easily transported from room to room. Two of these rollers can be identified to fix the system in the desired location.

Accessories



Two large and sturdy handles



Keyboard shelf



Extender for height adjustable aluminum columns in different versions



Brackets and wing lock for locking the side wings in front of the display



Two large and sturdy handles including laptop shelf



Lockable wall brackets

FEATURES

- > 2 lockable roller blind TV cabinets made of 19 mm melamine-coated chipboard for the storage of desktop PCs, mini PCs, laptops, etc.
- > Lockable cable management flap on the back, silver blinds on the front and lockable rear doors
- > 2 height-adjustable shelves left
- > 1 extract for appliances, e.g. for your notebook and 1 height-adjustable shelf on the right



Display mount



Mobile



Motorized height adjustable



Single display



5 years warranty



Max. load  
140 kg / 308.6 lbs

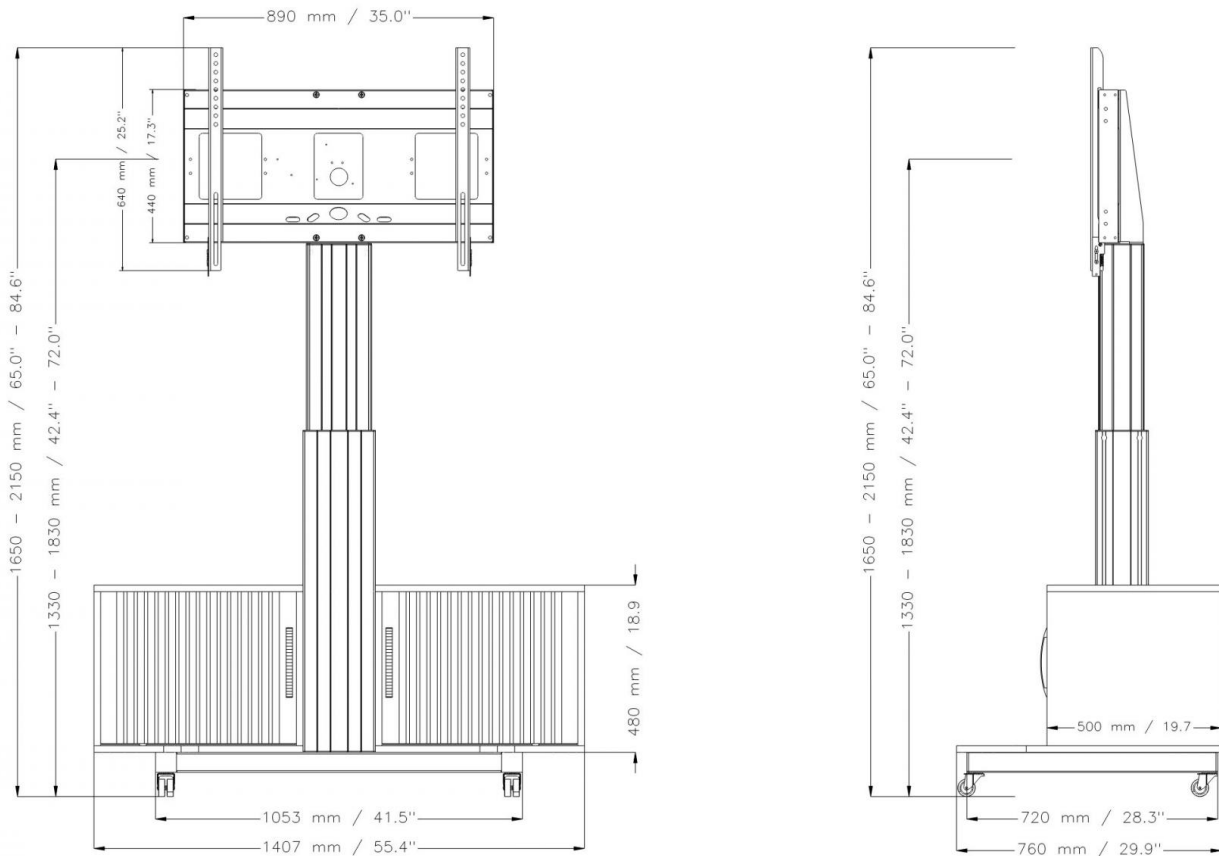


Max. Vesa  
800 x 600

| Item number                     | SCETAU                                   |                             |
|---------------------------------|--|-----------------------------|
| Vesa horizontal / Vesa vertical | 300 mm - 800 mm / 200 mm - 600 mm        |                             |
| Frame for all                   | 55" - 86"                                |                             |
| Center to floor distance        | 1330 mm - 1830 mm                        | 52.4" - 72"                 |
| Load capacity                   | 140 kg                                   | 308.6 lbs                   |
| Width / Height / Depth          | 1407 mm / 1650 mm - 2150 mm / 760 mm     | 55.4" / 65" - 84.6" / 29.9" |
| Weight                          | 117 kg                                   | 257.9 lbs                   |
| Warranty                        | 5 years limited warranty                 |                             |
| Frame color                     | RAL 9005 deep black                      |                             |
| Column color                    | Silver anodized                          |                             |
| Base color                      | RAL 9006 white aluminum                  |                             |
| Packages                        | Package dimensions WxHxD                 | Package weight              |
| AF-SCETA-N                      | 900 x 160 x 450 mm / 35.4 x 6.3 x 17.7"  | 13,6 kg / 30 lbs            |
| CAB-U                           |  |                             |
| CCE-70                          |  |                             |
| MST-SCETA                       | 1140 x 780 x 150 mm / 44.9 x 30.7 x 5.9" | 24,2 kg / 53.4 lbs          |

DIMENSIONS

in mm / inch



MANUFACTURER:

CONEN Produkte GmbH  
 Conenstr. 4  
 54497 Morbach-Gonzerath

Phone: +49 (0) 6533 75-100  
 Fax: +49 (0) 6533 75-600  
 E-Mail: info@conenmounts.com

Germany

[www.conenmounts.com](http://www.conenmounts.com)