

HEIGHT ADJUSTABLE MONITOR AND TV WALL MOUNT, LITE SERIES WITH 50 CM OF VERTICAL TRAVEL

COLUMN SILVER, ANTI-COLLISION, LOW MODEL

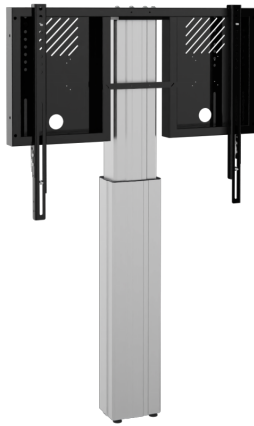
PRODUCT

Adjustable TV & monitor wall mount for 42"-75" (interactive) touch screen monitors.

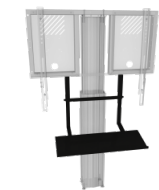
The RLI8050WK is designed for touch screen monitors up to 75". The units feature a sturdy monitor mount with integrated cable management and "pull & release" locking brackets for quick and easy mounting of the monitor.

The RLI8050WK comes with a slim column that offers 50 cm of vertical travel.

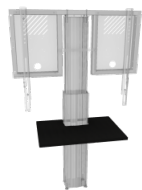
The unit comes flat-packed in 2 cartons and is courier-shippable.



Accessories



Keyboard shelf for LITE series



Front shelf for LIGHT system



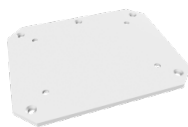
Laptop side shelf



Universal PC bracket



Floor plate for display mounts LITE series (CCELW-AF + RLi...)



Floor plate for Lite series (CCELW-AF + RLi...), for fixed floor mounting

FEATURES

- > Heavy duty mount for touch screen monitors up to 75"
- > "Pull & release" brackets for easy mounting of the monitor
- > VESA pattern, max. 800 x 600
- > Integrated cable management
- > 50 cm of smooth motorized height adjustment, actuator 1500N, 47 mm/ 1.85" per second
- > Levelling feet and 2 wall mounting brackets for optimum stability
- > With anti-collision function
- > Quick and easy mounting to the wall
- > Wired remote control included



Display mount



Wall mounted



Motorized height adjustable



Single display



5 years warranty



Max. load  
136 kg / 299.8 lbs

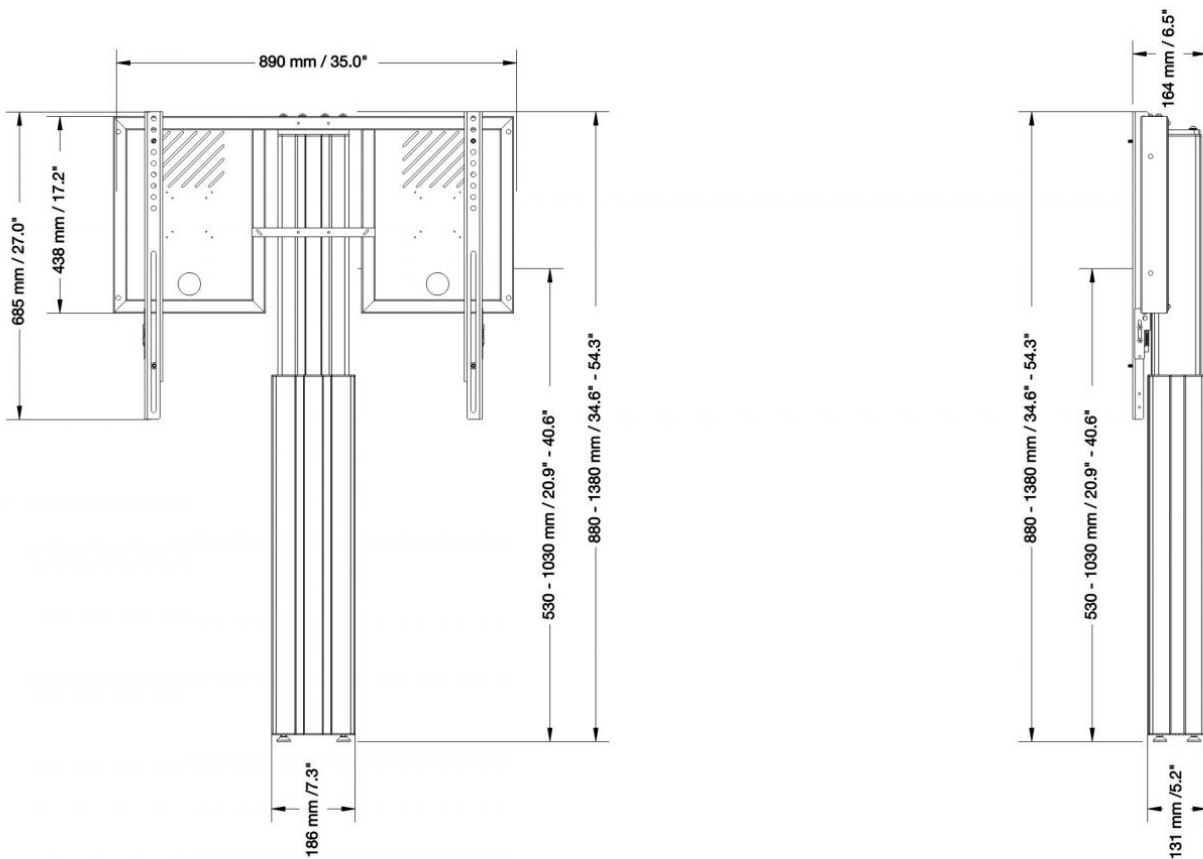


Max. Vesa  
800 x 600

Item number	RLI8050WK	
Vesa horizontal / Vesa vertical	300 mm - 800 mm / 200 mm - 600 mm	
Frame for all	55" - 75"	
Center to floor distance	550 mm - 1050 mm	21.7" - 41.3"
Load capacity	136 kg	299.8 lbs
Width / Height / Depth	890 mm / 880 mm - 1380 mm / 164 mm	35" / 34.6" - 54.3" / 6.5"
Warranty	5 years limited warranty	
Frame color	RAL 9005 deep black	
Column color	Silver anodized	
Packages	Package dimensions WxHxD	Package weight
AFSCETARLI	895 x 65 x 485 mm / 35.2 x 2.6 x 19.1"	14 kg / 30.9 lbs
CCEL8050WK	1005 x 245 x 195 mm / 39.6 x 9.6 x 7.7"	19 kg / 41.9 lbs
Total weight	33 kg / 72.8 lbs	

DIMENSIONS

in mm / inch



MANUFACTURER:

CONEN Produkte GmbH  
 Conenstr. 4  
 54497 Morbach-Gonzerath

Phone: +49 (0) 6533 75-100  
 Fax: +49 (0) 6533 75-600  
 E-Mail: info@conenmounts.com

Germany

[www.conenmounts.com](http://www.conenmounts.com)